

## New Library Opens



**Opening Day: May 23, 2007**

**Architect:** Lewis Architects  
Bellevue, Washington

**Contractor:** Colacurcio Brothers  
Blaine, Washington

Square Feet: 22,000  
Project Cost: \$5,970,178

Public Computers: 20, includes  
12-seat computer lab, plus  
wireless internet throughout  
Large meeting room capacity: 150  
Small meeting room capacity: 8  
Plus: Tutoring rooms, Teen area,  
Coffee and other vending  
machines, Puppet Playhouse

### Burlington Library Foundation

Pledges to the Foundation's Endowment Fund totaled \$120,000 in 2007. A portion of the proceeds went to purchase original art for the library.

From left to right: *The Guide* by Leo Osborne,  
*Old Growth and Salal* by Heather Waldron,  
*Toh Tactic* by Tony Bloom



## 2007

### Library Staff

Christine Perkins, *Library Director*  
Lisa Anderson, *Children's Librarian*  
Janet Royer, *Circulation Supervisor / System Administrator*  
Janice Burwash, *Senior Library Associate*  
Mary Beth Conlee, *Reference and ILL Coordinator*  
Virginia Crandall, *Technical Services Coordinator*  
Dalia Delgado, *Library Assistant*  
Abel Diaz, *Library Associate*  
Lisa Dills, *Library Associate*  
Rachel Gage, *Library Assistant*  
Isabel Rodriguez, *Library Assistant*  
Isela Villalobos, *Library Assistant*



Molly Morrow, *Library Page*  
Olivia Doyle, *Library Page*  
Sara Flores, *Library Page*  
Kate Stice, *Library Page*  
Michelle Venegas, *Library Page*

### Board of Trustees

Ben Schertzer, *President*  
Valerie Sanders, *Secretary*  
Joe DeGloria  
Sharon Mainard  
Peggy Stowe

### Library Hours

Monday - Thursday  
11:00 a.m. - 8:00 p.m.  
Friday and Saturday  
11:00 a.m. - 5:00 p.m.  
Sunday - Closed

Open hours per week: 48  
Days open in 2007: 269  
Closed April 16 - May 23 = 37 days  
Days in new library: 176

### Library Dues

Free for City of Burlington  
residents and property owners

Non-resident dues  
Annual Family Card: \$60.00  
Annual Senior Card: \$45.00  
6-month Family Card: \$35.00  
3-month Family Card: \$20.00



### Population

City of Burlington: 8,420

### Friends of the Burlington Public Library

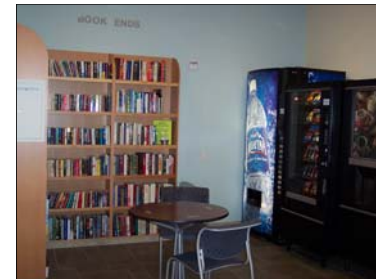
Edie Edmundson, *President*  
Janice Burwash, *Secretary*  
Barbara Bostrom, *Co-Treasurer*  
Doris Reichert, *Co-Treasurer*

### Friends Activities

Berry Dairy Days Parade, Name the  
Nook Contest, Used Book Sales

### Fundraisers

Spring Book Sale:	\$ 904
Fall Book Sale:	\$1,031
Continuous Book Sale:	<u>\$2,728</u>
Total:	\$4,663



Book Ends - the Friends book sale  
nook in the library lobby.

# Annual Report 2007



# Burlington Public Library

# Year in Review

## 2007 - Quick Facts

### Cardholders

Registered cardholders: 7,242  
 Active cardholders\*: 3,147  
     Active residents: 2,039  
     Active non-residents: 955  
     Active other: 153

\*used their card in 2007

New cards issued in 2007: 2,184

### Annual Revenues

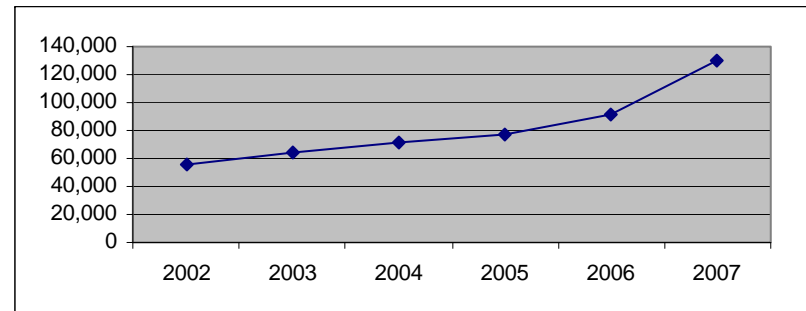
Beg. Net Cash: \$ 40,000  
 Property Tax: \$120,000  
 Sales Tax: \$238,000  
 Grants & Misc.: \$ 6,667  
 Copy Machine: \$ 2,436  
 Non-resident Dues: \$ 23,415  
 Fines: \$ 8,518  
 Reserve Fund: \$ 10,500  
                   \$456,203

Book Budget: \$ 32,700  
 Opening Day  
     Collection: \$250,000

### Collection

Total items in collection: 45,662  
 Magazine and newspaper  
     subscriptions: 110

### Annual Circulation 2002 - 2007



2007 Circulation Total: 129,806      2007 Library Visits: 151,593!!!  
 That's 15 items checked out for every person in Burlington.

### Did you know?

We started a volunteer program this June and 31 volunteers worked over 600 hours through December.

### Interlibrary Loan

ILL items requested: 200  
 Cost to buy these items: \$4,500  
 Cost for ILL Service: \$1,001  
 Savings: \$3,399

### Did you know?

Our patrons borrowed books from 60 libraries in 20 states, from Arizona to Wisconsin.

### Meeting Rooms

The library has hosted 294 scheduled meetings in our 4 public meeting rooms since the new building opened in May -- an average of 9 meetings a week.

### Did you know?

Internet use jumped 64% over 2006, totaling 17,731 logins. Our new internet lab seats 12.



Book Brigade: April 16, 2007



Vida Evans, Alpha Club Treasurer and last surviving member of the group that founded the library.

### In 2007 we:

- Formed a human book brigade to the new library.
- Installed 2 self-checkout stations that handle 51% of all transactions.
- Celebrated our Grand Opening with 1,785 library supporters.
- Became a favorite meeting place for non-profit groups.
- Began offering self-service holds.
- Received a CCTV and hand held magnifiers for vision impaired patrons from the Burlington Lions.



Preview party: May 12, 2007

Grand Opening Celebration: June 16, 2007

## Partnerships

On Our Shelves book reviews in the *Skagit Valley Herald*  
 Skagit Libraries Summer Reading • Upper Skagit server  
 Local service clubs • Shakespeare NorthWest • Welcome Baby  
 Burlington-Edison Healthy Communities Coalition  
 Theatre Arts Guild • META Performing Arts

## Children's Services



Left to right: Sterling Dietz, Teen Magician • Amanda V. found Ike, the Summer Reading Dog • Here's Waldo @ your library

### Programming

Visitors to storytime: 172  
 Summer Reading Programs: 9      SRP Attendees: 883  
 BPL hosted the all-county end of summer party featuring Brothers From Different Mothers juggling troupe.

### Connecting Learners to Libraries Grant

Five 4th grade classes from LU & West View Elementary Schools sharpened information skills in preparation for WASL testing, with the help of Waldo and a federal grant.



Left to right: Tina Bixby, Puppeteer • Alleyoop, Stories and Songs • Last Leaf Productions, Fairy Tales

## Community Outreach

Brown Bag Booktalks • "It Takes a Valley" Children's Resource Fair  
 ESL Class Tours • Youth Appreciation Day at LU • Back to School Fair  
 Family Literacy Night at West View • Burlington Morning Kiwanis  
 Burlington Noon Kiwanis • Burlington Lions • Burlington Rotary  
 Burlington Mid-Day Rotary • Burlington Sorooptimists